



ENGLISH

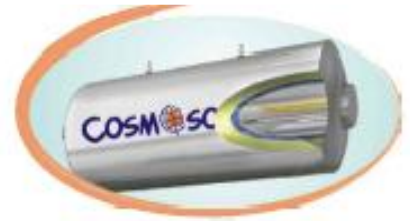
**Horizontal tanks for Solar Water Heaters**

*Technical Data Sheet*



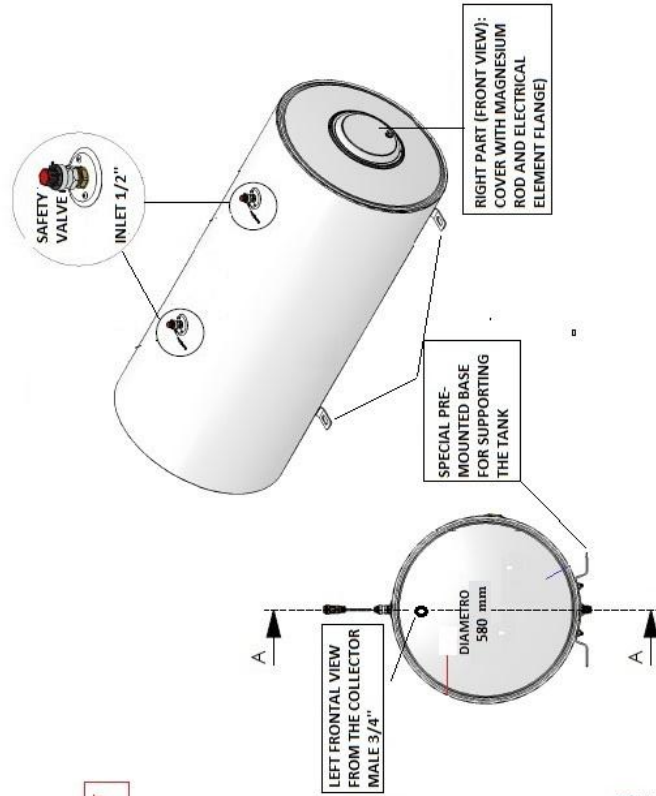
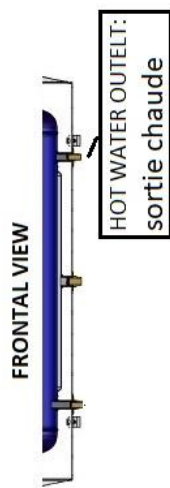
**1. technical specifications of the cylinders**

- Interior: 316L HiMo Stainless Steel 2.0mm thick
- Heat exchanger: jacket (mantel) type of the above material, 1,2 mm thick
- Heat exchanger outlets: Stainless steel 316L HiMo M 3/4''.
- Cylinder's outlets: Stainless steel 316L HiMo M 1/2''.
- Safety valves outlet: Stainless steel 316L HiMo M 1/2''.
- Patented diffusers ENERGON®:
  - one in the inlet of the jacket (mantel) forcing the thermal fluid coming from collectors to be distributed in the mantel,
  - another one in the cold-water inlet of the inner tank, distributing the water supply of the house throughout the tank, offering this way a better stratification. Practically, we have a slow reduction of the temperature of the water when used.
- Insulation: expanded P.U. (52 kgr/m³) 50 mm thick, CFC free.
- P.U. thermal conductivity: 0,0180 W/mK
- Outer cover: Aluminum, oven painting treatment, Seaside Class.
- Side covers: steel, oven painting treatment, Seaside Class.
  - Protection against electrolysis (cathodic protection): 1 replaceable magnesium rod Ø 22/L:500mm for the tanks 120, 150, 170 and 200L and Ø 32/L:500mm for the 300L, plus one fixed on the opposite side.
- Inspection flange / electrical back up: INCOLOY alloy, Ø 140mm.
  - Electrical back up included, with safety thermostat (overheating) of power according to place of destination (1.5 - 4.0Kw).

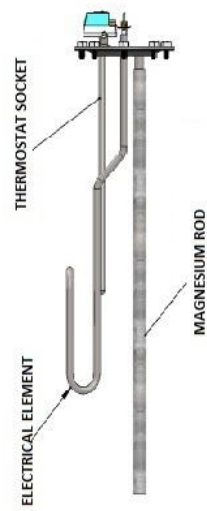


<b>Tank model</b>	<b>BL INP 120</b>	<b>BL INP 150</b>	<b>BL INP 170</b>	<b>BL INP 200</b>	<b>BL INP 300</b>
<b>Dimensions (mm)</b>	1120 x 500	1300 x 500	1200 x 580	1320 x 580	1820 x 580
<b>Weight empty (kg)</b>	43	51	51	56	90
<b>Heat exchanger capacity (lt)</b>	4,0	4,5	4,5	5,0	9,0
<b>Real capacity (lt)</b>	120	150	160	200	295
<b>Energy labelling</b>	B	B	B	B	C

HYDRAULIC CONNECTIONS



ELECTRICAL BACK-UP DRAWING





**electric element datasheet**

Applied standards: EN60335-1, 202/95/EC



electric element for solar water heaters

- \* material EN 1.4301
- \* female threaded position for anode M8
- \* socket for thermostat material EN1.4301
- \* standard tensions: 1, 1.2, 1.5, 2, 2.5, 3, 3.5, 4KW - 230V (1)
- \* power density: 9.3W/cm<sup>2</sup>
- \* tube DIA: 8.5mm +/- 0.1mm
- \* OHMIC Value: 31.2 - 36.2 Ω
- \* dielectric strength: max 5mA - 2500V

(1) upon request other tensions could be available

Cosmosolar S.A.  
Pylí Dervenochorion 32009 - Viotia, Greece

Cosmosolar Srl  
Via Ecetra 28, Frosinone (FR) 03100 - Italy



**solar water heater thermostat datasheet**



- \* max tension 20A (230V)
- \* max operation temperature 75 Celcium degrees (1)
- \* safety button at 95 Celcium degrees
- \* immersion edge L=280mm
- \* material copper
- \* adjustable at different temperatures
- \* anti-freezing function in position 0.5

(1) modified upon request

Cosmosolar S.A.  
Pylí Dervenochorion 32009 - Viotia, Greece

Cosmosolar Srl  
Via Ecetra 28, Frosinone (FR) 03100 - Italy